



**CAT**



**Ring Power** **CAT**

# **CAT<sup>®</sup> SIMULATORS PRODUCTS & TRAINING OVERVIEW**

**SIMULATION TRAINING SOLUTIONS  
FOR HEAVY EQUIPMENT OPERATORS**



# CAT® SIMULATORS ABOUT US

Simformotion™ LLC is a privately held, women-owned business headquartered in Peoria, Illinois, USA. Founded in 2009, Simformotion specializes in heavy equipment training technologies and services with sales worldwide.

As the licensee for Cat® Simulators for Caterpillar Inc., we work closely with Cat operator experts to develop simulators that help organizations dramatically lower costs and address safety, production and sustainability initiatives. From authentic Cat® controls to motion to VR technology, our training simulators help operators learn and transition seamlessly to the iron faster than traditional training methods.

Replacing part of traditional on-the-iron training with Cat Simulators training can significantly impact an organization's bottom-line goals and sustainability strategies because simulators do not burn fuel, use fluids, create emissions or incur maintenance costs.

Simformotion also features exclusive turnkey training curriculums with a 1:1 match to the simulators. Through strategic partnerships, we offer many other effective training experiences, including simulation and VR, that help learners become efficient, productive heavy equipment operators.



Cat Simulators' global presence allows heavy equipment operators worldwide to learn how to properly operate machinery or master new skills and techniques every day.

**6**

**CONTINENTS**

**92**

**COUNTRIES**

**3**

**INDUSTRIES**

# WHY CAT® SIMULATORS?

Built with authentic  
Cat® controls.



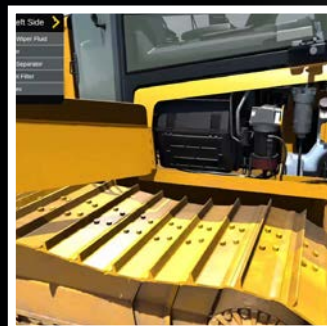
Built with the expertise  
of Caterpillar subject-  
matter experts.



Hundreds of measurable  
benchmarks to track  
learner progress.



Exclusive Walkaround  
training teaches pre-  
operation machine  
inspection procedures.

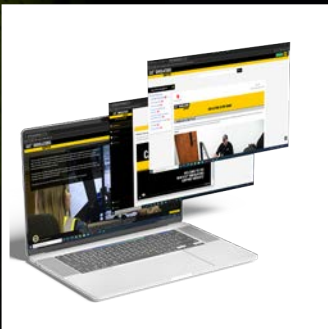




**Multiple training exercises based on real-world machine applications.**



**Available in multiple languages.**



**All simulators backed by full 24x7 technical support.**



**Cat Simulators is a Caterpillar-licensed brand.**

# PRODUCTS CONSTRUCTION



## HYDRAULIC EXCAVATOR

Includes all the foundational applications learners need to get started, plus more challenging techniques like trenching and truck loading.

## ADVANCED CONSTRUCTION EXCAVATOR

Teaches learners more difficult operations like using a thumb and bench loading while refining skills.



## SIMLITE EXCAVATOR

Learners build on techniques throughout the training to master Excavator applications and skills on the compact and portable system.



## SMALL DOZER

Includes basic skills such as stockpiling and berm building, as well as advanced techniques like pad construction and more.

## TRACK TYPE TRACTOR/DOZER

Includes basic skills such as stockpiling and berm building, as well as advanced techniques like pad construction and more.



## ADVANCED DOZER

Teaches learners more difficult operations like pushing trees and ramp building while refining skills.

## SIMLITE DOZER

Learners build on techniques throughout the training to master Dozer applications and skills on the compact and portable system.





## MOTOR GRADER

Packed with training exercises, learners gain experience with foundational applications, plus more challenging techniques like v-ditching and finish grading.

## ARTICULATED TRUCK

Learning the temperament of an articulating hitch is best done in a virtual environment. The system teaches foundational applications, plus more challenging techniques.



## BACKHOE LOADER

Teaches learners practical applications like lifting and trenching while also understanding tipping points.

## SMALL WHEEL LOADER

Includes many foundational applications learners need to get started, plus more challenging techniques like truck loading and using forks.



---

## SMALL WHEEL LOADER SKILL BUILDER

Pick up, move and interact with different objects in an open environment. Customize scenarios or practice Small Wheel Loader applications as desired.



---

## COMPACT TRACK LOADER

Learners build on techniques throughout the training to get a solid understanding of Compact Track Loader applications on the full size simulator.

---

## SIMLITE COMPACT TRACK LOADER

Learners build on techniques throughout the training to get a solid understanding of Compact Track Loader applications on the compact and portable system.



# PRODUCTS MINING



## MINING TRUCK

Teaches learners foundational applications like driving and braking, plus many other challenging applications.

## MINING TRUCK SKILL BUILDER

Learners hone skills and gain more experience operating the Mining Truck by learning applications used in a Full Production Cycle or by practicing freely in the environment.



## OFF-HIGHWAY TRUCK

Teaches learners foundational applications, plus more challenging techniques like hauling and unloading.



---

## MINING DOZER/LARGE TRACK TYPE TRACTOR

Teaches many foundational applications that learners need to get started, plus more challenging techniques like ripping and dozing over a highwall.

---

## LARGE MINING DOZER WITH COAL

Includes specific machine training for applications in coal, such as pushing coal into a feeder and erosion control.



---

## LARGE WHEEL LOADER

Teaches learners how to operate the Large Wheel Loader in a quarry, including dumping into a crusher and loading into a truck.

# TRAINING BEST USER EXPERIENCE

Get the best user experience with Cat® Simulators by integrating our products and services together within your heavy equipment program. Find out how they can help your training program succeed.



# SIMULATORS + SIMUCAMPUS + CURRICULUM

## CAT® SIMULATORS

Cat Simulators provide an immersive, hands-on learning encounter for operator trainees and students, built on an interactive, standardized platform. Cat Simulators contain authentic controls and is a licensed brand of Caterpillar.



## SIMU CAMPUS™

In addition to a hands-on learning experience, each simulator includes a program that records and reports all user session results when the user is logged into SimU Campus. Each simulator measures users on hundreds of benchmarks, then saves the results to the simulator's computer database to track users' progress.

## SIMSCHOLARS™

Simscholars curriculum is companion education that provides a blended learning experience with a one-to-one match to each simulator model. The turn-key curriculum is built on a learning management system (LMS) and available online at [lms.simscholars.com](https://lms.simscholars.com).

With content based on the machine, environment or industry, the curriculums step out each exercise for learners to build skills for leveled learning development and can be used in the classroom or for remote learning

The turn-key solution provides instructor and learner guides, interactive lessons, quizzes, tests, step-by-step videos and more. The system includes a reporting system to track learners' progress.

# TRAINING ACCREDITATION

## CAT® SIMULATORS & NCCER™

Simformotion™ has partnered with the National Center for Construction Education & Research (NCCER). The construction industry recognizes NCCER for its training, assessment, certification and career development.

Together, Simformotion and NCCER, will offer a credential to individuals who complete the identified Cat Simulators training, SimScholars™ Curriculum and NCCER curriculum. Upon completion, an NCCER-certified craft instructor will assess and award learners a construction simulator training credential.



### SIMULATION-BASED CREDENTIAL

Cat Simulators systems, along with their companion SimScholars Curriculum and the NCCER

curriculum, combine simulation experiences with theoretical classroom training. This combination provides learners with the “why” behind the machine applications and the skills needed to operate actual machines on real-world worksites.



## CAT® SIMULATORS CERTIFICATES AND NCCER STUDENT CERTIFICATIONS

Students who complete the program can earn up to three certificates and a certification, with the opportunity to earn another credential.



### **SimScholars™ Safety Training Certificate**

To receive this certificate, students must demonstrate they understand the basics of personal safety, jobsite safety and machine safety.



### **SimScholars Curriculum Certificate**

To receive this certificate, students must demonstrate they understand the best practices of operating the machine and the skills used around the jobsite.



### **Cat Simulators Certificate**

To receive this certificate, students must meet the required skills metrics and practice operating the machine on a Cat Simulators system.



### **NCCER Simulation-based Credential**

To receive this credential, students must show they meet NCCER's rigorous expectations for simulator practice.



### **NCCER Machine Credential**

To receive this credential, students must pass a test showing their skills on an actual machine.

# CAT® SIMULATORS

**CONTACT US TO LEARN MORE  
TODAY!**

info@ringpower.com  
(904) 494-7578



© 2025 Caterpillar. All Rights Reserved. CAT, CATERPILLAR, LET'S DO THE WORK, their respective logos, "Caterpillar Corporate Yellow", the "Power Edge" and Cat "Modern Hex" trade dress as well as corporate and product identity used herein, are trademarks of Caterpillar and may not be used without permission. [www.cat.com](http://www.cat.com) / [www.caterpillar.com](http://www.caterpillar.com)

Simformotion™ LLC is a licensee of Caterpillar Inc.